

All the **expertise** you need under one roof

When you're choosing a home that sets a new standard for quality and convenience, why not work with a financial partner who offers the same? At SCU, we deliver unparalleled service from a team of knowledgeable experts. We know the Manitoba market, and what it means to have a partner in your corner who serves your best interests first and foremost.

Limited time, exclusive offer

When you work with us, you'll always receive exceptional rates along with sound advice, and custom financing solutions tailored to meet your needs. For a limited time, we've designed a new financing offer just for 390 on the River.

- Choose from fixed or variable rates
- Up to 35 year amortization period
- Low down payments, with flexible repayment options
- No appraisal required
- Local in-house financing
- No fees

5-YEAR VARIABLE
CLOSED
3.70%*

3-YEAR FIXED
4.50%*

5-YEAR FIXED
4.55%*

Exclusive benefits with SCU

Easy application process

From start to finish, we make the process of financing your home as easy as possible. Lending specialists are available to meet at 390 on the River to begin your mortgage application.






Preapproved Equity Link Line

During your mortgage preapproval, you will also be approved for an unsecured line of credit of up to \$20,000. Enjoy inexpensive and easy access to funds when you need it.

Prepayment privileges

We offer prepayment privileges that allow you to repay up to 20% of your mortgage's initial value each year. What's more, our variable open mortgage offers no penalty for early repayment.

Becoming an SCU member means you'll enjoy:

-  Tailored solutions to suit all of your savings goals and borrowing needs.
-  Highly competitive mortgage rates, flexible payment options, and prepayment privileges.
-  Easy in-branch approval process and local decision making
-  Member bonus: Over the last 20 years, SCU has shared over \$80 million in cash back bonuses with our members.
-  We are one of Canada's largest credit unions with in excess of \$8 billion in assets and more than 100,000 members.

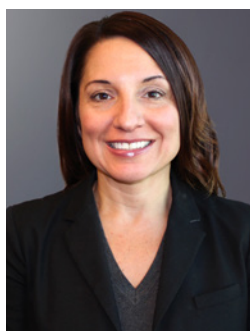


Ready to take the next step? Get in touch!



Sandra Neufeld
Linden Ridge Consumer Lender
SNeufeld@scu.mb.ca
Phone: 204.928.7821

Linden Ridge Branch
2100 McGillivray Blvd.
Winnipeg, MB R3Y 1X2
Phone: 204.222.2100



Sabrina Nizzola
Lagimodiere Consumer Lender
SNizzola@scu.mb.ca
Phone: 204.654.7416

Lagimodiere Branch
1575 Lagimodiere Blvd.
Winnipeg, MB R3W 0B9
Phone: 204.661.1575