

LOMBARD

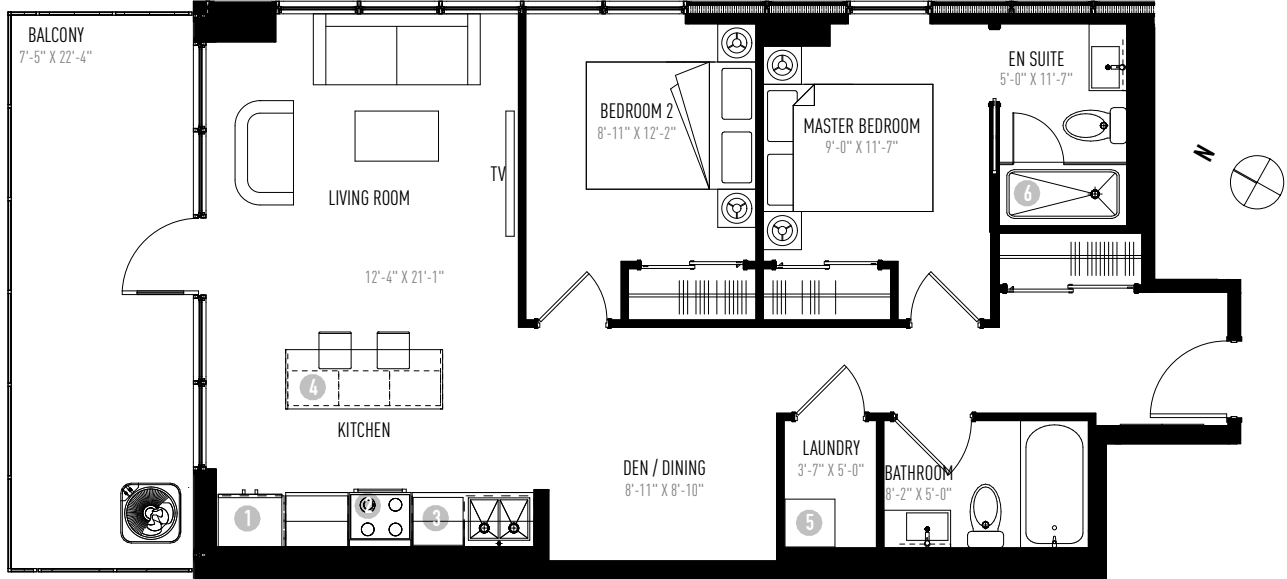
FLOORS 7-17 UNIT 1

2 BEDROOM

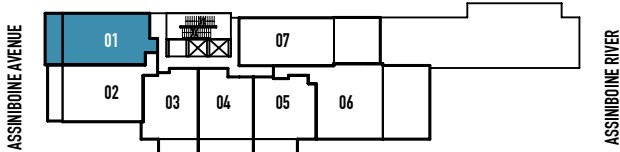
2 BATHROOM / DEN/DINING

849 SQ FT

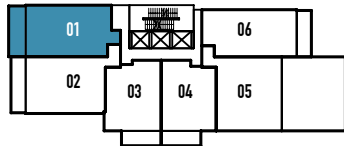
EXTERIOR: 163 SQ FT



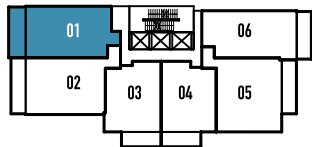
FLOOR 7



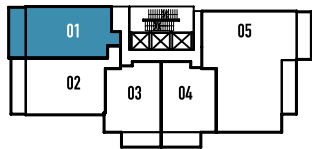
FLOOR 8



FLOORS 9-15, 17

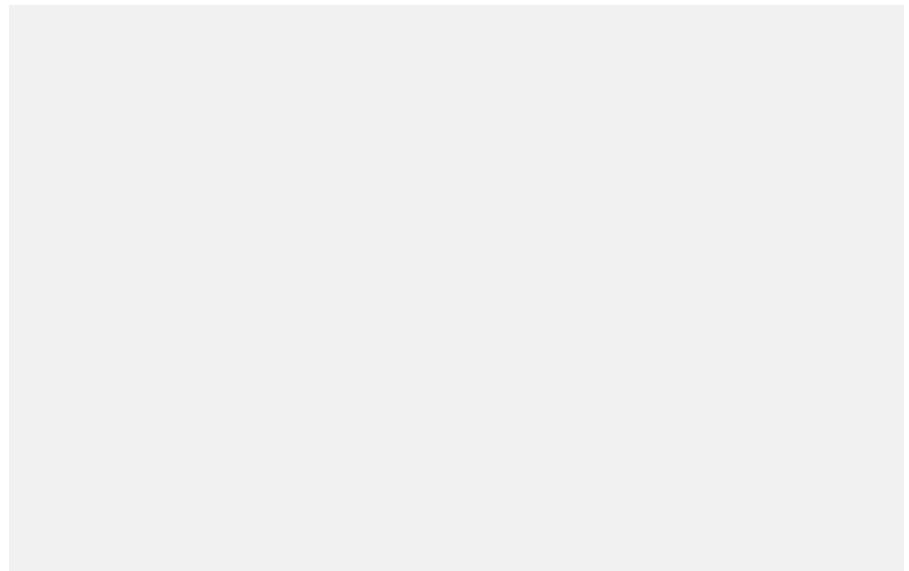


FLOOR 16



- 1 FISHER & PAYKEL FRIDGE
- 2 JENN-AIR OVEN/COOKTOP
- 3 JENN-AIR DISHWASHER
- 4 PANASONIC MICROWAVE
- 5 STACKED WHIRLPOOL WASHER/DRYER
- 6 WALK-IN SHOWER

NOTES:



APPLIANCES

PACKAGE FOR FLOORS 6 - 17

(EXCEPT SUITE ASSINIBOINE 1605 ON FLOOR 16)



OVEN

JENN-AIR

30" single wall oven with Multimode® convection system



COOKTOP

JENN-AIR

30" induction cooktop.



MICROWAVE

PANASONIC

Inverter stainless steel microwave



TRIM KIT

PANASONIC

27" trim kit for select microwaves



DISHWASHER*

JENN-AIR

24" built-in Trifecta™ 42 dBA dishwasher



HOOD FAN

BROAN

290 CFM stainless steel power pack



FRIDGE*

FISHER & PAYKEL

ActiveSmart™ 36" refrigerator, French door integrated with ice, 72" tall



WASHER

WHIRLPOOL

5.2 cu. ft. front load washer with TumbleFresh™ option



DRYER

WHIRLPOOL

7.4 cu. ft. electric dryer with quick dry cycle

*Integrated panel to match cabinets