

# PRINCESS

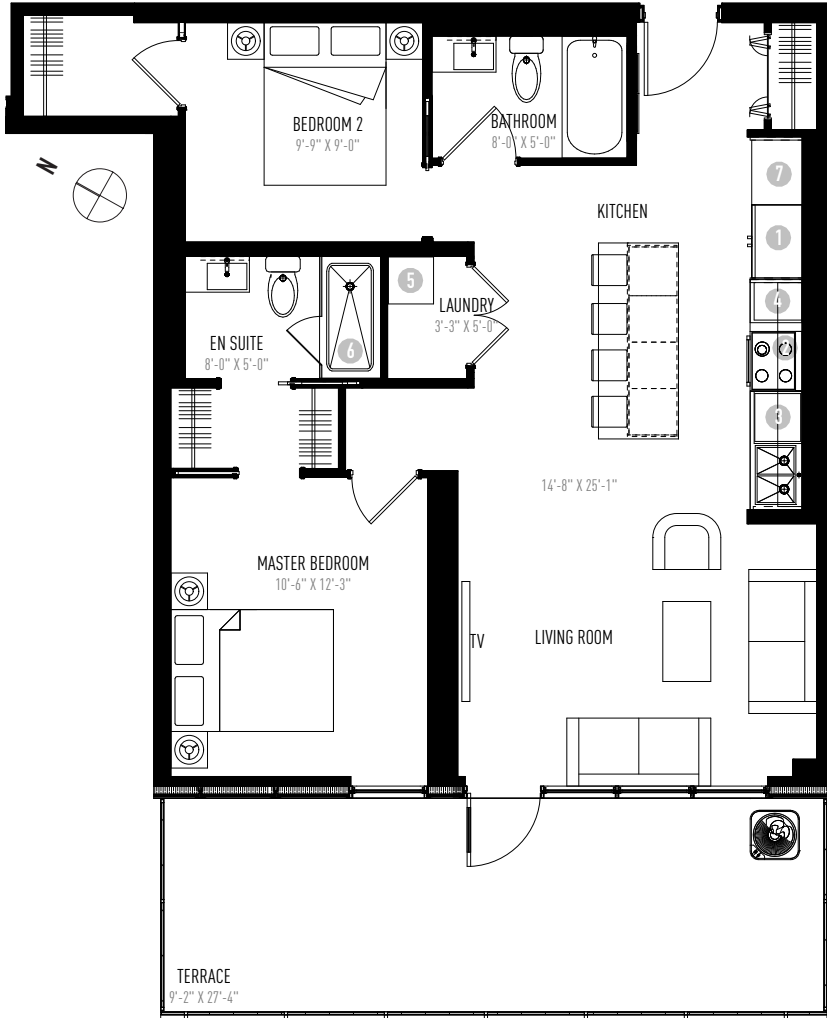
FLOOR 6 UNIT 5

**2 BEDROOM**

**2 BATHROOM**

**903 SQ FT**

EXTERIOR: 163 SQ FT

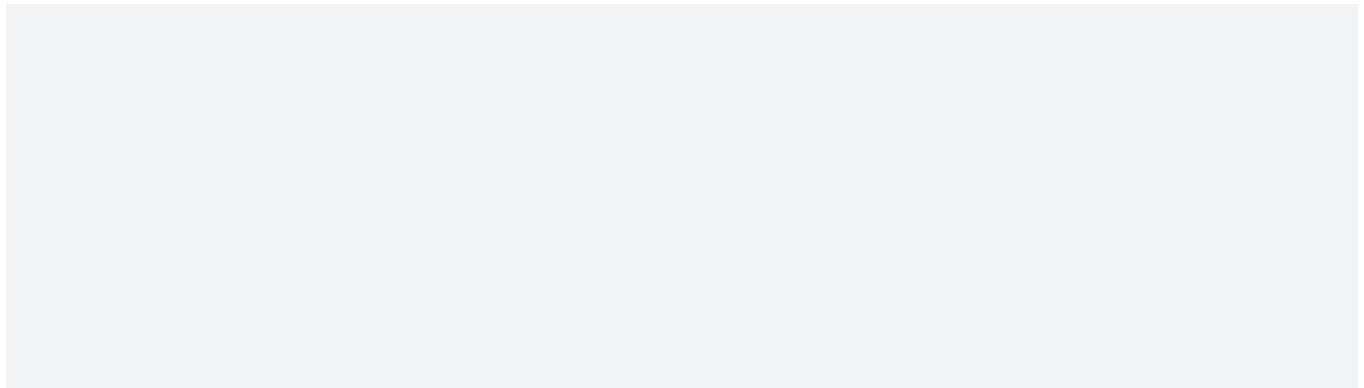


- 1 FISHER & PAYKEL FRIDGE
- 2 JENN-AIR OVEN/COOKTOP
- 3 JENN-AIR DISHWASHER
- 4 PANASONIC MICROWAVE
- 5 STACKED WHIRLPOOL WASHER/DRYER
- 6 WALK-IN SHOWER
- 7 PANTRY

FLOOR 6



NOTES:



# APPLIANCES

## PACKAGE FOR FLOORS 6 - 17

(EXCEPT SUITE ASSINIBOINE 1605 ON FLOOR 16)



### OVEN

JENN-AIR

30" single wall oven with Multimode® convection system



### COOKTOP

JENN-AIR

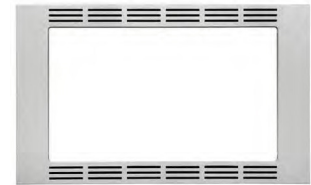
30" induction cooktop.



### MICROWAVE

PANASONIC

Inverter stainless steel microwave



### TRIM KIT

PANASONIC

27" trim kit for select microwaves



### DISHWASHER\*

JENN-AIR

24" built-in Trifecta™ 42 dBA dishwasher



### HOOD FAN

BROAN

290 CFM stainless steel power pack



### FRIDGE\*

FISHER & PAYKEL

ActiveSmart™ 36" refrigerator, French door integrated with ice, 72" tall



### WASHER

WHIRLPOOL

5.2 cu. ft. front load washer with TumbleFresh™ option



### DRYER

WHIRLPOOL

7.4 cu. ft. electric dryer with quick dry cycle

\*Integrated panel to match cabinets